



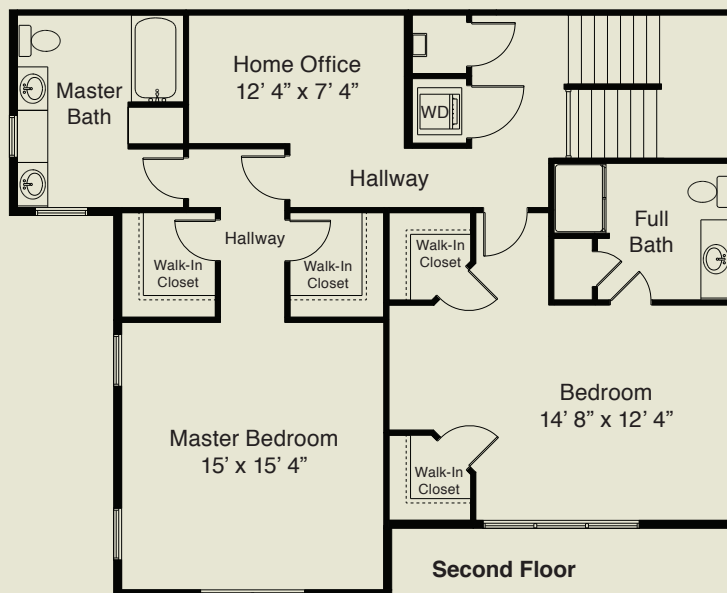
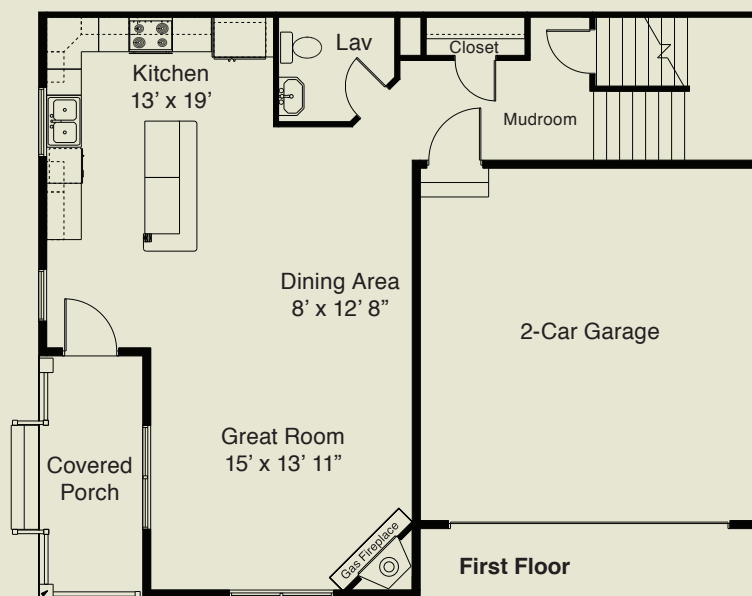
The Williamsburg 1,960 Sq. Ft.



One of our largest townhomes offers something for everyone. Privacy, space, practicality, character, and convenience converge in the Williamsburg's remarkable floor plan. The Williamsburg is ideal for those seeking a balance of work and play without sacrificing elegance.

Description: Two bedroom, 2.5 bath, two-story end unit townhome with large kitchen, open office space, covered porch, and attached two-car garage.

Unfinished Basement:
746 Square Feet



(860) 875-7200 • 155 Windermere Ave Ellington, CT

www.deervalleynorth.com A Santini Community

