



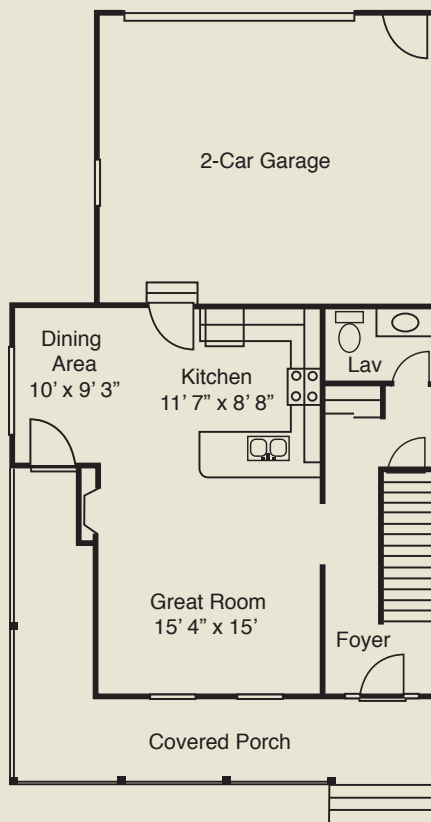
Kennebunkport 1,439 Sq. Ft.



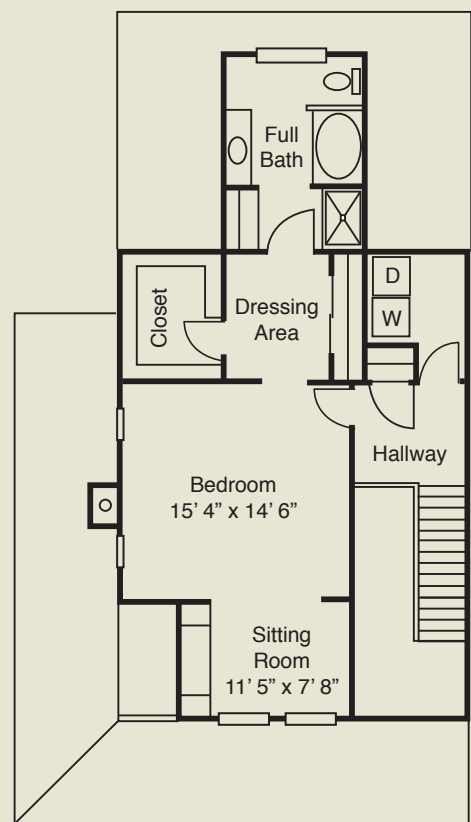
Respond to an invitation for pampering in this two-story open and airy floor plan. An oversized master suite complete with dressing area, garden tub, and sitting area offers a spa-like retreat. The wrap around porch is perfect for sitting outside on a clear summer night.

Description: Two-story end unit townhome, one bedroom with a sitting room and dressing area, 1.5 baths, great room with fireplace, dining area, two-car garage, and wrap around porch.

Unfinished Basement:
586 Square Feet



First Floor



Second Floor