

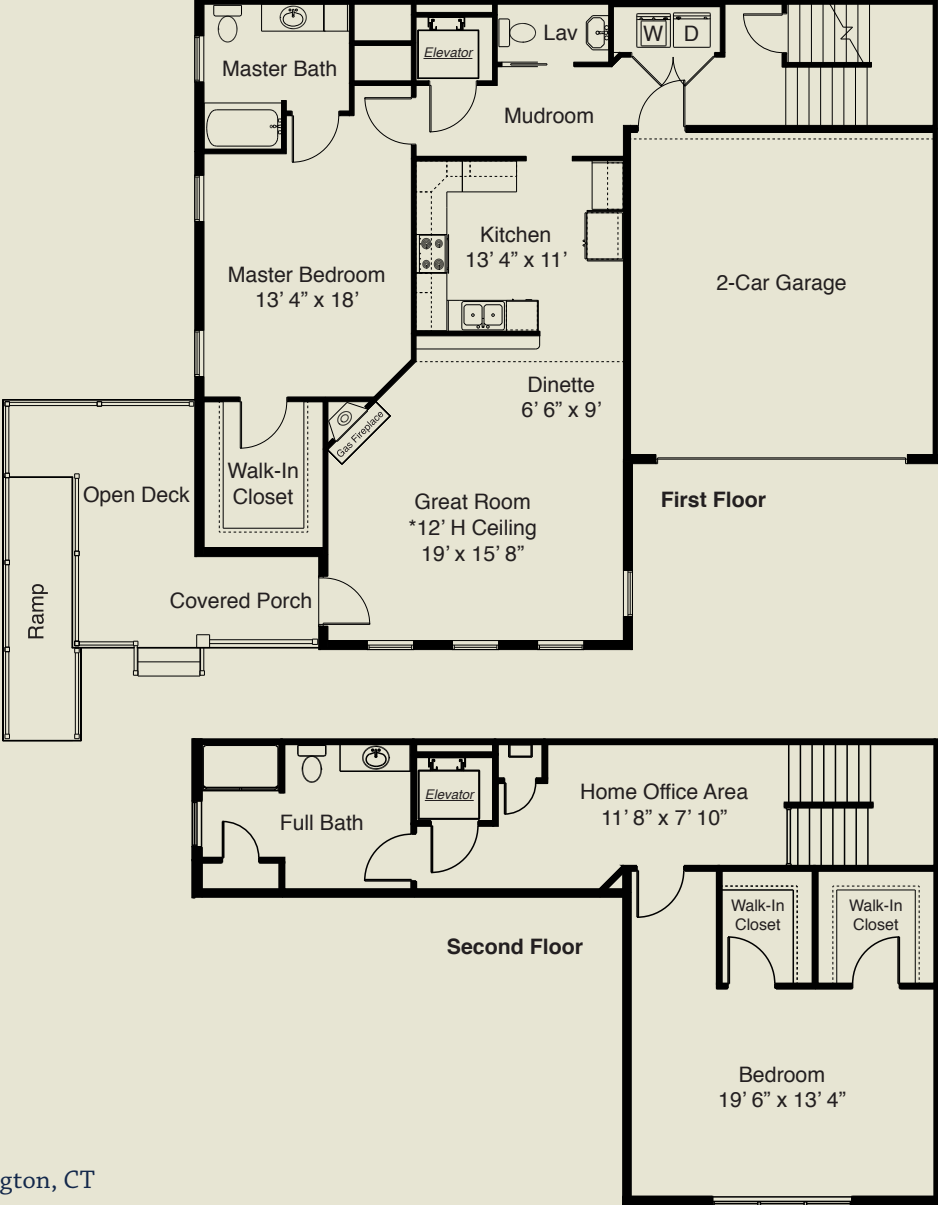


The Jamestown 2,055 Sq. Ft.

This unique two bedroom townhome offers privacy, natural light, and the convenience of a first floor master bedroom. The inviting kitchen opens up to the great room which features 12-foot ceilings, large windows with transoms, and a corner fireplace. The Jamestown is ideal for those who value the everyday convenience of a first floor master bedroom and in-unit elevator along with the flexibility provided by a large and private second bedroom.

Description: Two-story end unit townhome with two bedrooms, 2.5 baths, home office area, in-unit private elevator, and attached two-car garage.

Unfinished Basement:
1,181 Square Feet



(860) 875-7200 • 155 Windermere Ave Ellington, CT



A Santini Community www.deervalleynorth.com