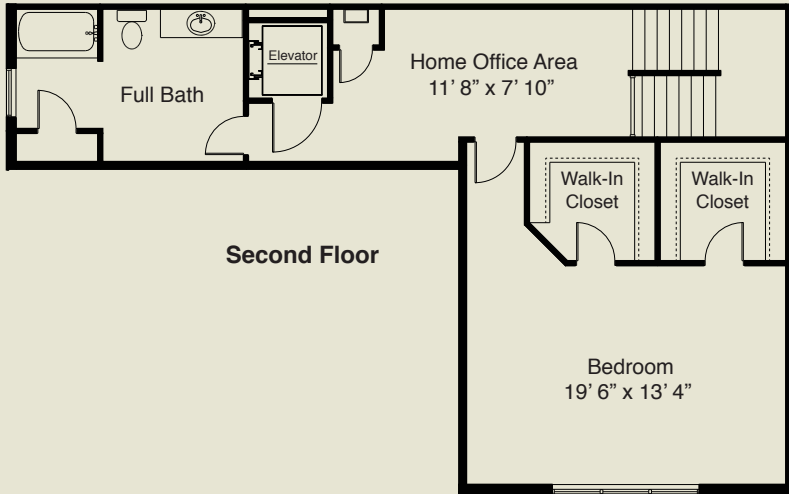
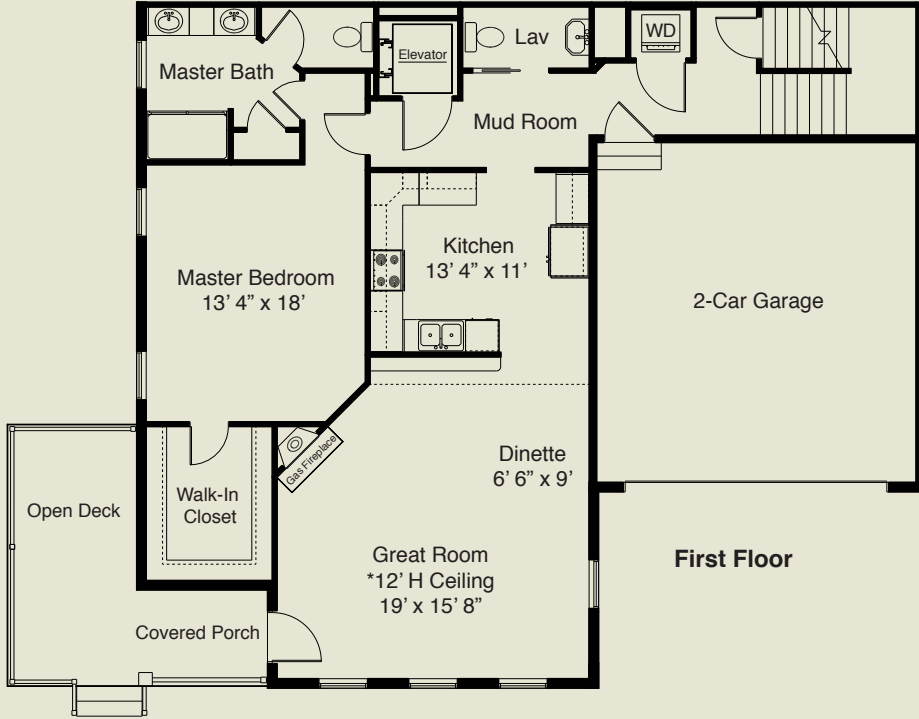


# The Jamestown II *2,055 Sq. Ft.*

This unique two bedroom townhome offers privacy, natural light, and an elegant private in-unit elevator. The Jamestown II's master bedroom features a large walk-in closet and a reconfigured en-suite master bath with dual sinks and additional privacy. This unit is ideal for those who value the everyday convenience of a first floor master bedroom with the flexibility provided by a large and private second bedroom.

**Description:** Two bedroom, 2.5 bath, two-story townhome with a fireplaced great room, home office area, and attached two-car garage.

Unfinished basement:  
1,181 Square Feet



(860) 875-7200 • 155 Windermere Ave Ellington, CT



A Santini Community [www.deervalleynorth.com](http://www.deervalleynorth.com)